

# In Case of Emergency



In case of fire or accident

→ After contacting [the emergency contact](#), please immediately report to the faculty member in charge and ask for instructions.

If a large area of your body is contaminated by chemicals or other toxic substances

→ Rinse immediately with an emergency shower. Emergency showers are located on each floor as shown in the layout diagram, so please make sure you know where they are located.

If a suspicious person or object is found in the building

→ Please contact the security office at Ext. 63010 immediately.

## ◎ Emergency stairs

In Kibantou emergency stairs are located on the east and west sides of each floor. Please confirm its position in advance. The use of the emergency stairs is prohibited except in an emergency. Do not unlock the door to the emergency stairs unless it is an emergency. There are outdoor stairs and escape ladders in Jikkentou, please make sure you know their locations.

◎ Security cameras are installed at various locations at Kashiwa Campus, including the entrance to the buildings. The security office and the Facility Center are staffed 24 hours a day. The campus is patrolled at night by guards from a private security company. The security office personnel will escort unaccompanied individuals to nearby bus stops and other such locations, so please use this service if necessary.

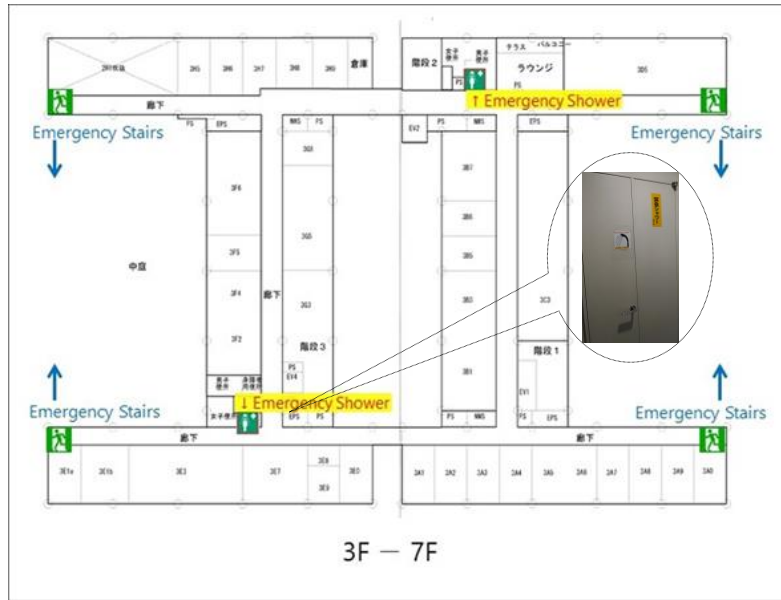
◎ AEDs are equipped at the entrances of the East Wing of Kibantou and on the first floor of Jikkentou.

◎ Stretchers are located by the mailboxes on the first floor of the East Wing of Kibantou.

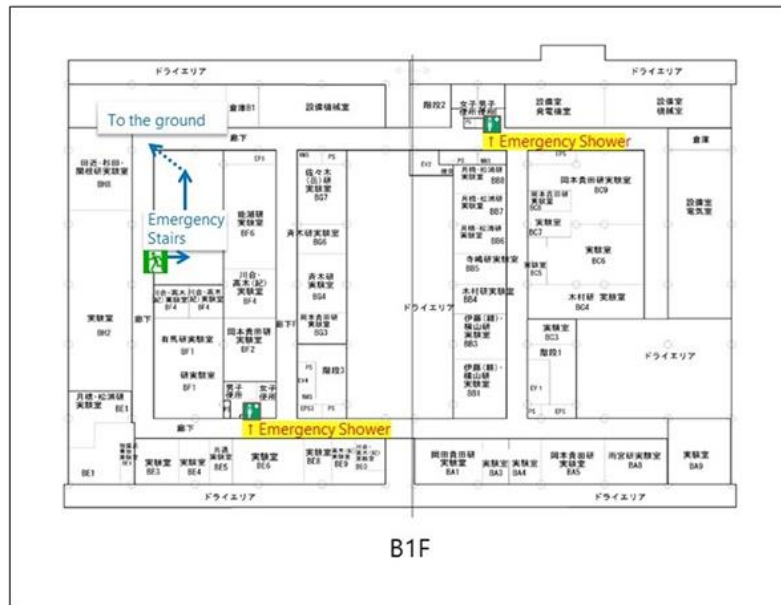
◎ Please also refer to the Emergency Response page of [Safety Manual](#).



## 【Kibantou : Floor Guide of Emergency showers and Emergency stairs】

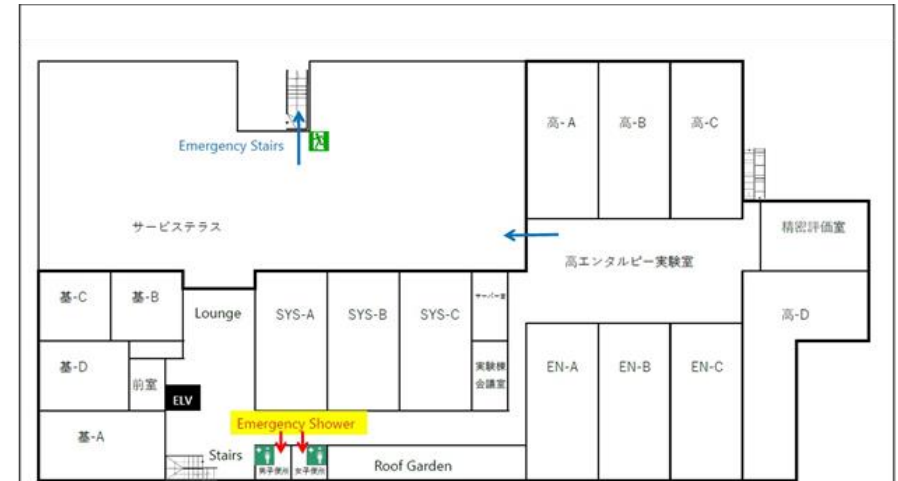


3F - 7F



B1F

## 【Jikkentou : Floor Guide of Emergency showers etc.】



2F



1F・M2F